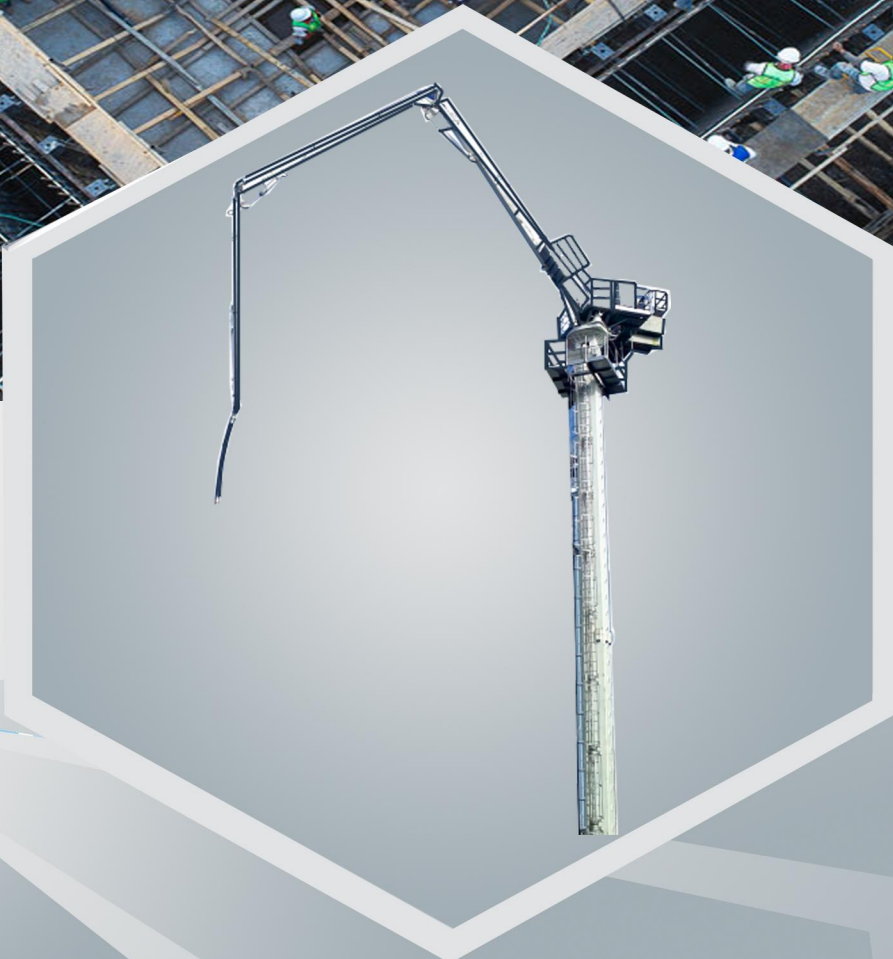




**KAMUJA**

**COLUMN CLIMBING PLACING BOOM**

**HG28A-3R-II / HG32A-3R-II / HG33A-4R-II**



**Hunan Kamuja Machinery & Equipment Co.,Ltd**



A Certificated Company of GB/T 19001-2016  
ISO 9001:2015

## INTRODUCTION

The column climbing placing boom is used together with trailer pumps for large height pumping applications.

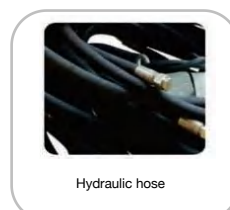
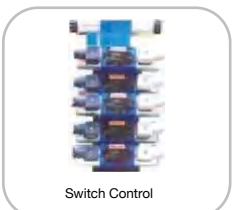


## FEATURES

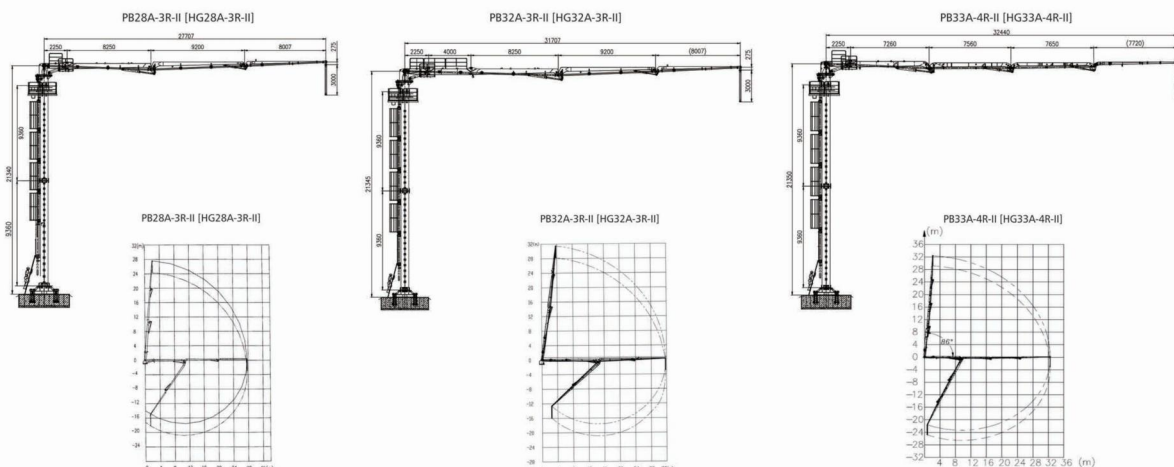
- ① The light weight of the whole machine is conducive to floor loading.
- ② The hydraulic pump station and electric control cabinet are integrated on the lower support, which is convenient for on-site installation and reduces the failure rate.
- ③ The weight of the lifting unit is greatly reduced, with less site lifting capacity requirement.
- ④ Without balance arm, more flexible on the operation.

## OPTIONALS

- Columns: can be customized columns of different length according to working application 4M, 5M, 6M,10M.
- Mode of climbing: floor climbing,shaft climbing.

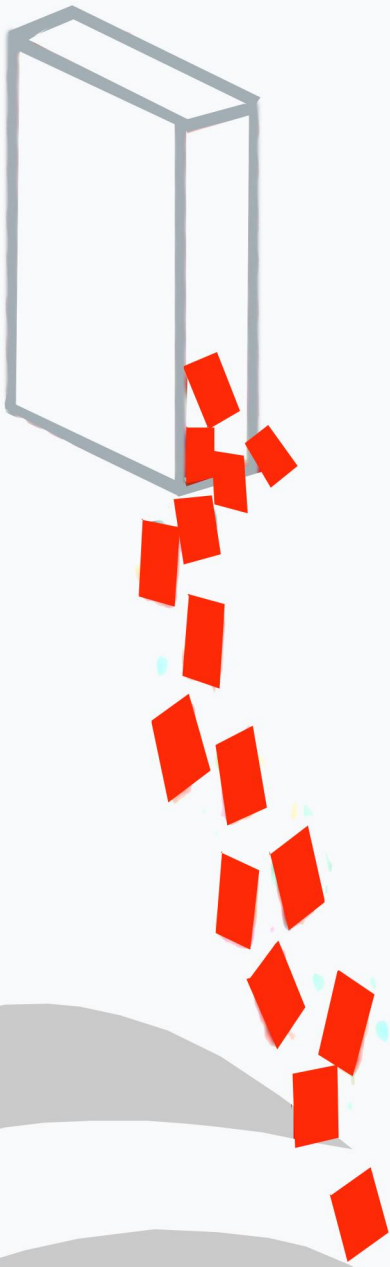


## STRUCTURE AND SCOPE OF WORK



## SPECIFICATIONS

TEMS		UNITS	HG28A-3R-II	HG32A-3R-II	HG33A-4R-II	
Performance	Max Radius of Placing Boom		m	27.7	31.7	32.4
	Free standing Heightflb The Joint Between The End of The Boom And Slewing Platform)		m	21.3	21.3	21.3
	Slewing Range		/	360°	360°	360°
	Circumstance Temperature		°C	-20-55	-20-55	-20-55
	Power(subject to Customer)		/	380V/50HZ	380V/50HZ	380V/50HZ
	Delivery Pipeline Diameter		mmxmm	0133x4.5	0133x4.5	0133x4.5
	Delivery Hose Diameter		"xmm	5" x 300	5" x 3000	5" x 3000
Boom	1st Section	Length	m	10.5	14.5	9.51
		Articulation	/	0~86	0~86	0~86
	2nd Section	Length	m	9.2	9.2	7.56
		Articulation	/	0~180	0~180	0~180
	3rd Section	Length	m	8	9.2	7.65
		Articulation	/	0~180	0~180	0~180
	4th Section	Length	m	/	/	7.72
		Articulation	/	/	/	0°~180°
Type of Hydraulic Oil	Circumstance Temperature 5°C-55°C		°C	Hm46 Anti-wear hydraulic oil	Hm46 Anti-wear hydraulic oil	Hm46 Anti-wear hydraulic oil
	Circumstance Temperature -20°C-5°C		°C	Hm32 Anti-wear hydraulic oil	Hm32 Anti-wear hydraulic oil	Hm32 Anti-wear hydraulic oil
Motor	Power		kW	11	11	18.5
Hydraulic Pressure			MPa	28	28	30
Mode of Slewing			/	Gear Slewing	Gear Slewing	Gear Slewing
Application scenario			/		Floor Climbing or Shaft Climbing	
Balance Arm			/	/	/	/
Total Weight			kg	16200	18150	20100
Max Lifting Unit			kg	4100	4150	4800



## Hunan Kamuja Machinery & Equipment Co.,Ltd

Address: Qingzhu Hu Road N.18, Chang Tong Logistic Center Floor 4 Room 818,  
Jinxia Economic Development Zone, Changsha City, Hunan Province, P.R of China.

333 SE 2nd Avenue Suit 2000 Miami FL 33131. USA

Tel: +86 731 8867 7248 e-mail: [info@kamuja.cn](mailto:info@kamuja.cn)

Web site: [www.kamuja.cn](http://www.kamuja.cn)



A Certificated Company of GB/T 19001-2016/  
ISO 9001:2015